

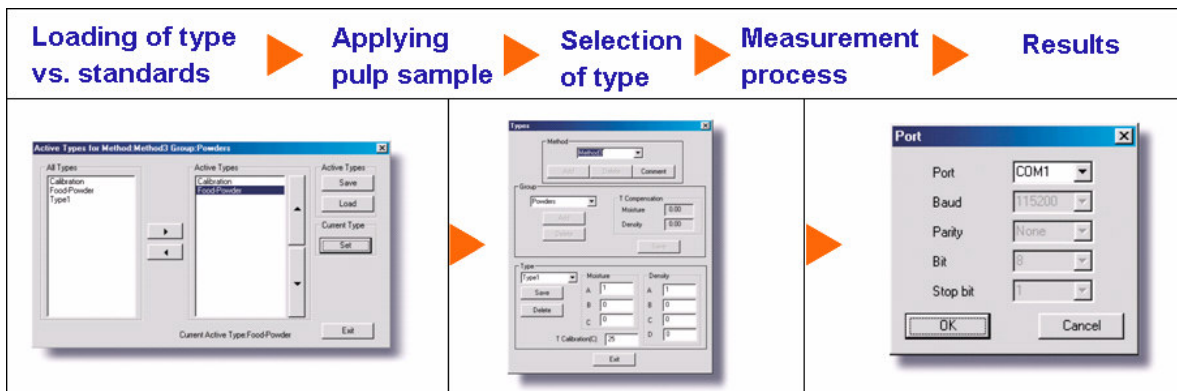
MLS-Ex/Pulp

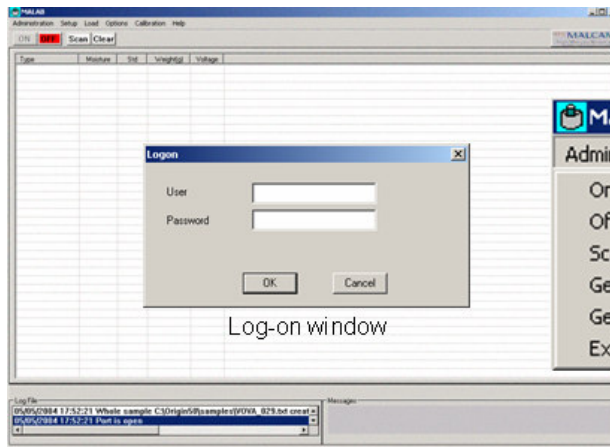


Modular mobile lab test system for fast and reliable moisture measurement of pulp samples

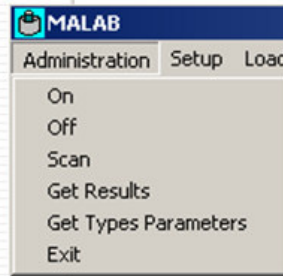
MAIN FEATURES

- Provides fast, accurate and reliable results
- Allows for on-site testing—no need to send samples to the lab
- Based on proven MMA scanning technology and architecture
- Volumetric testing of large samples
- Provides density vs. moisture uniformity information
- Measures samples' temperature and weight
- Suitable for different types of material
- Reduces sample preparation time
- Connects to computer via RS-323 for data log, diagnostics and unit setup
- Multi-scenario based software and data-base running under Windows NT/2000/XP
- Complies with all major industry standards, enabling calibration to specific user methods, using multi-scenario features
- All measurements are non-destructive

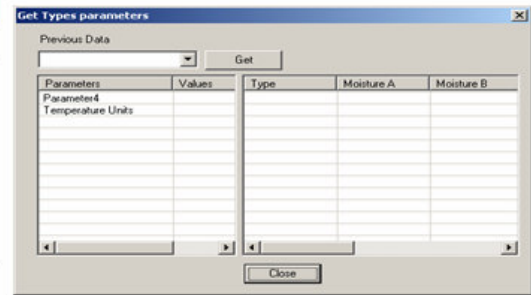




MLS-Ex main screen



Administration menu options



Type parameters window

ABOUT THE MODULAR LAB SYSTEM

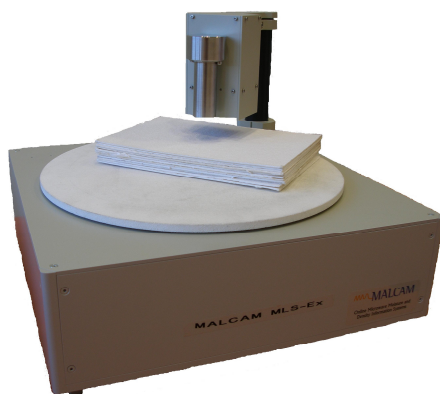
MLS-Ex eliminates the time-consumption involved in lab ovens' moisture testing methods. Compact and mobile, it is based on Malcam's patented and field-proven microwave scanning technology, providing highly accurate moisture, temperature and weight readings of pulp samples in seconds.

The MLS-Ex also easily integrates with Malcam's online MMA systems, providing a fast solution for system calibration without having to wait for lab oven test results and with minimum human intervention.

The MLS-Ex connects via RS-232 to any PC running under Windows 2000/NT/XP.

The multi-scenario/multi-type MALAB add-on data analysis software tool, includes a text database and graphs, enabling the recording and display of data such as moisture, temperature and weight of samples, calibration, up-load parameters and the testing of many types of products with different characteristics.

SPECIFICATIONS



Moisture range:	5-15%
Accuracy:	Better than 2% relative to the reading
Repeatability:	Better than 95%
Measurement time:	Less than 30 seconds
Data storage:	Battery-buffered CMOS memory
Data output:	LCD display, 0-10V or 4-20 MA inter face via RS 232 to MALAB software
Power:	110-220 VAC +10%;50/60 Hz, Less than 1/2 Amp
Operation conditions:	5-40 °C, 10-90% RH
Evaluation unit:	Compact and portable
Sample application:	300 mm diameter holding a stack of pulp sample sheets

HEADQUARTERS

MALCAM Ltd.
27 Habarzel st. Tel Aviv
69710, ISRAEL
T: +972-3-6485664
F:+972-3-6488335
info@malcam.com,
www.malcam.com

US OFFICE

MALCAM Inc.
51 JFK Parkway, Short
Hills, NJ 07078, USA
T: (908) 561-8549 F:
(201) 816-0070
infousa@malcam.com,
www.malcam.com

ABOUT MALCAM

MALCAM Ltd. Is an ISO-9001 company that specializes in online and offline moisture and density deviation measurements systems and advanced software tools for industries that automatically process bulk and packaged material.

Established in 1996, the company holds several international patents and its systems are operational in hundreds of sites worldwide.